

062639

RECEIVED
LARAMIE COUNTY
CHEYENNE, WY.

Northeast corner Section 29 T18N R65W
CERTIFIED LAND CORNER RECORDATION

OCT 5 PM 3 01

DESCRIPTION OF CORNER EVIDENCE FOUND, AND ORIGINAL RECORD (if known)

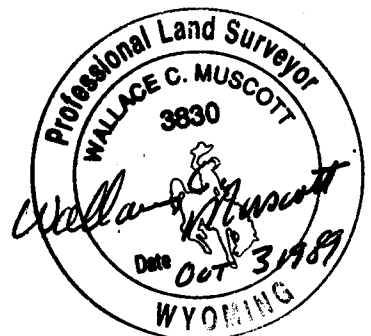
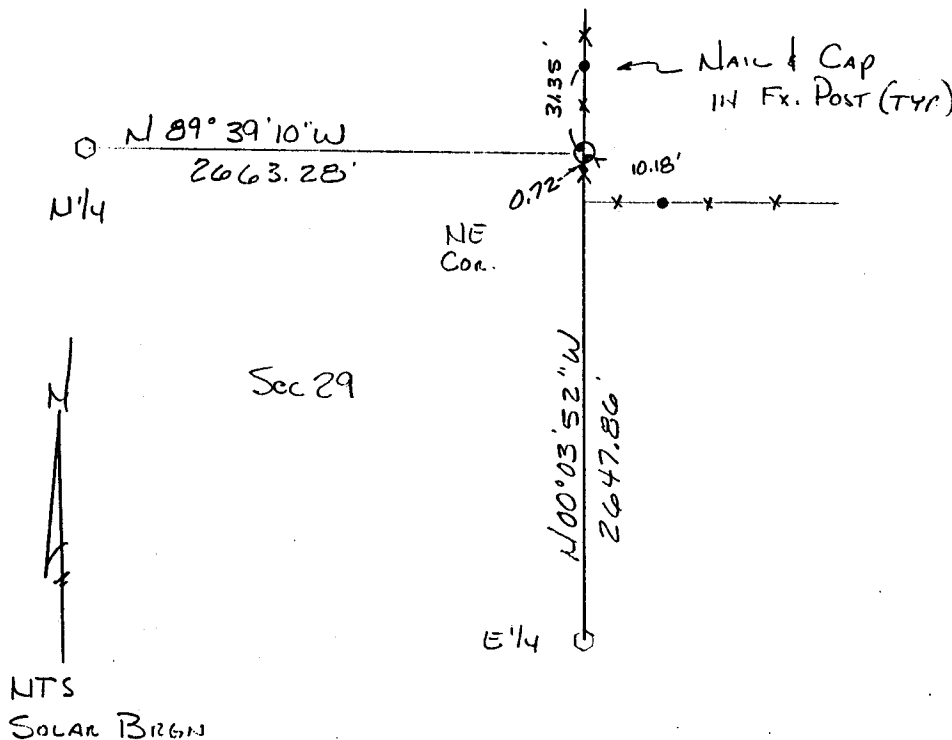
Found the original stone as per a previous Monument Record by J.D. Youngquist filed March of 1986. Accepted the found stone as the corner.

DESCRIPTION OF MONUMENT AND ACCESSORIES ESTABLISHED TO PERPETUATE THE ORIGINAL LOCATION OF THIS CORNER:

We replaced the found stone with a 30" long No5 rebar with a Corps of Engineers Brass Cap. Set the stone alongside and raise a mound of stone. Tied to an existing fence as shown below.

AUG 25 1989

SKETCH, WITH COURSE AND DISTANCE TO ADJACENT CORNER IF DETERMINED IN THIS SURVEY.
(May Sketch or Paste Reproduction on Reverse Side.)



I, Wallace C. Muscott certify that I have carefully performed or reviewed the work done on the diagrammed corner as reported on this recordation form and approve the same.

Wallace C. Muscott
Signature of Surveyor

3830
Registration No.

STATE OF WYOMING,
Office of Clerk and Recorder,
County of _____

This "corner record" was filed for record on the _____ day of _____, 19____, was noted on the cross-index plat and is assigned page No. _____, in book No. _____.

County Official			
Cross Index No. <u>R 9</u>	T. <u>18N</u>	R. <u>65W</u>	<u>6th</u> Mer.
_____	T. _____	R. _____	Mer.
_____	T. _____	R. _____	Mer.
_____	T. _____	R. _____	Mer.
_____	T. _____	R. _____	Mer.
_____	T. _____	R. _____	Mer.
_____	T. _____	R. _____	Mer.